

ROCKWOOD

MINI LITES & ROO

ROCKWOOD
PROVIDING OUTDOOR FUN SINCE
1974



ROCKWOOD MINI LITES & ROO



ROO
MINI LITES



OVER 40 YEARS OF EXCELLENCE

FROM HUMBLE BEGINNINGS, ROCKWOOD HAS EMERGED AS AN INDUSTRY LEADER IN THE MANUFACTURING OF LIGHT WEIGHT TRAVEL TRAILERS, FIFTH WHEELS AND CAMPING TRAILERS.

Located in Millersburg, IN since 1974, Rockwood has been supported by this community and the local families residing there. These families have helped provide the hundreds of workers that have brought their dedication to quality workmanship, respect for their fellow workers and a commitment to an uncompromising work ethic to make a major contribution to this company's success. Founded on the principle of providing superior value and service while remaining in tune with customer's preferences, Rockwood has become the ultimate luxury product in the light weight trailer market, proudly showcasing more innovative floor plans, appealing features and refined interior appointments than any others in its class.





TODAY, ROCKWOOD REMAINS COMMITTED TO INSURING THAT OUR CUSTOMERS ENJOY THEIR CAMPING EXPERIENCES.

Through the utilization of our experienced work force, "state of the art" lamination facility, modern production plants and detailed assembly processes our aim is to continue to provide our customers with the best built product possible at an unmatched value.



231KSS

THE TRADITIONAL ROCKWOOD ROO AND MINI LITES CONTINUE TO PROVIDE UNSURPASSED VALUE AND COMFORT.

The spacious interiors offer numerous windows, 80" vaulted ceilings with directional vented air conditioning and extensive interior LED lighting throughout. Rich with appointments like solid surface kitchen counter tops and under mount kitchen sinks (select models), a stove top with glass cover, 22" oven and distinctive Maple or Driftwood cabinets with solid wood doors and drawer fronts throughout add to the tremendous value provided.



Optional Oyster Exterior

Featuring an aluminum framed with vacuum bonded construction, high gloss fiberglass exterior and deluxe graphics, the Rockwood Roo and Mini Lite products are among the best constructed, most well insulated trailers available on the market today.



Optional Oyster Exterior

Rockwood travel trailer models are loaded with features like Polished alloy wheels with Nitro filled radial tires mounted to Dexter Torflex Torsion Rubber Ride Axles for a smooth, safe ride, plus that clean Rockwood look with framless bonded windows and an automotive front windshield where applicable.



21SSL

2304KS

INTERIOR COLORS: JASPER / MAPLE



A NEW STANDARD HAS BEEN RAISED.

To continue this tradition, Rockwood offers a group of appealing features to enhance your lifestyle and camping experience. Standards like brand name appliances, ducted furnaces for heating, a quick recovery auto gas / electric water heater and built in entertainment centers with Blue Tooth technology and a sound bar, plus many more standards. For those who really want to get away all our units are solar ready!

Styling and amenities while keeping your towing and camping needs in mind.

THE EVOLUTION OF EXCELLENCE



ROCKWOOD

MINI LITE

Towing a trailer doesn't require a truck anymore. When towing size and weight are your focus. You will find that these specially designed Mini Lite models offer flexible floor plans that provide you with more comfort and amenities that you would expect all within the towing capacity of many small SUV's and Mini Vans

2504S



Standard White Exterior

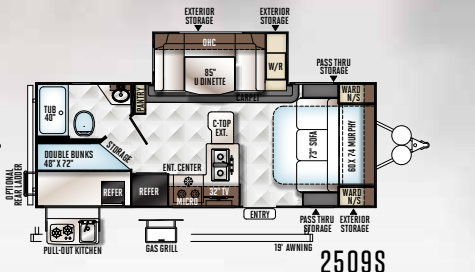
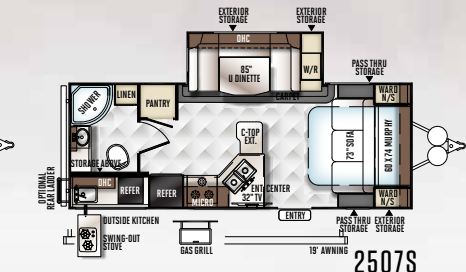
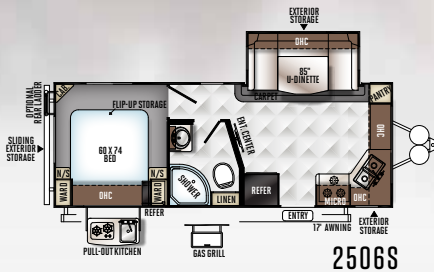
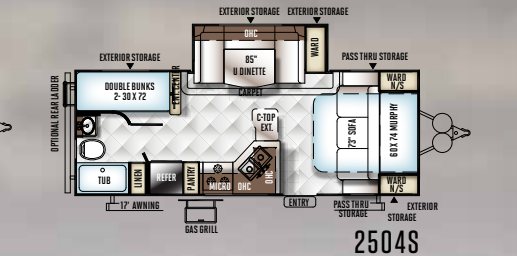
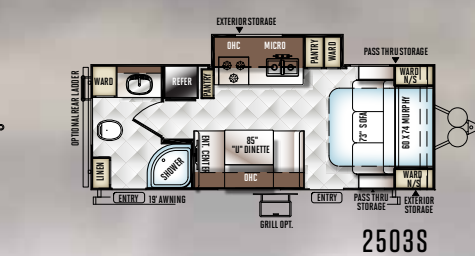
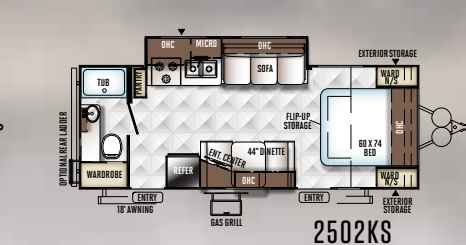
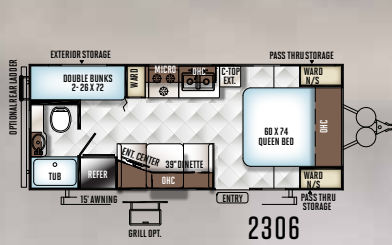
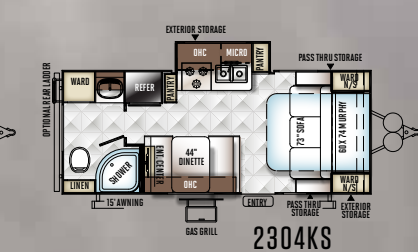
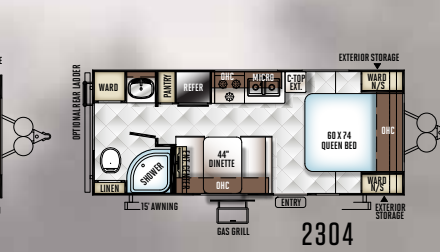
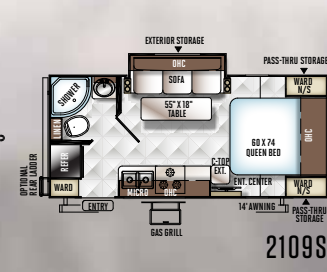
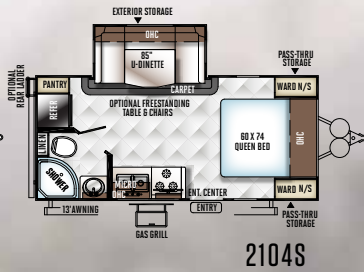
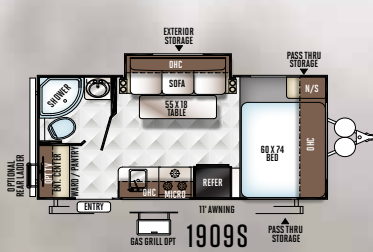
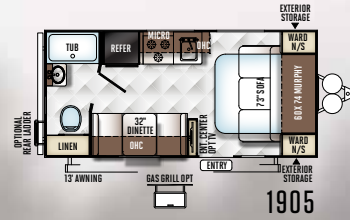
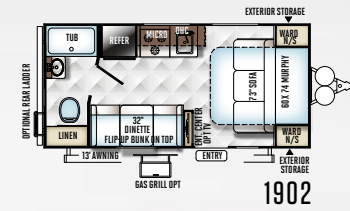
INTERIOR COLORS: STERLING / DRIFTWOOD



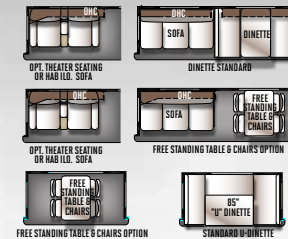
SPECIFICATIONS & FLOORPLANS

	1902	1905	1909S	2104S	2109S	2304	2304KS	2306	2502KS	2503S	2504S	2506S	2507S	2509S
Unloaded Vehicle Weight *	3148	3064	3316	4247	4203	4052	4249	3984	4540	4518	4910	4838	5124	5074
Base Dry Hitch Weight	397	398	442	508	506	529	572	509	499	651	635	671	543	660
Base Dry Axle Weight	2692	2628	2836	3680	3638	3464	3618	3416	3982	3808	4216	4108	4522	4355
Cargo Capacity	749	834	626	1461	1503	1377	1423	1425	1459	1433	1525	1433	1619	1586
Length (Hitch To Bumper)	20' 4"	20' 4"	20' 4"	21' 7"	21' 7"	23' 7"	23' 7"	23' 7"	25' 7"	25' 7"	25' 9"	25' 9"	25' 9"	25' 9"
Width	96"	96"	96"	96"	96"	96"	96"	96"	96"	96"	96"	96"	96"	96"
Height With A/C	122"	122"	122"	131"	123"	123"	123"	123"	124"	124"	131"	131"	131"	131"
Interior Height	80"	80"	80"	80"	80"	80"	80"	80"	80"	80"	80"	80"	80"	80"
Fresh Water Capacity	43 gal	43 gal	43 gal	43 gal	43 gal	43 gal	43 gal	43 gal	43 gal	43 gal	43 gal	43 gal	43 gal	43 gal
Gray Water Capacity	30 gal	30 gal	30 gal	30 gal	30 gal	30 gal	30 gal	30 gal	30 gal	30 gal	30 gal	60 gal	30 gal	30 gal
Black Water Capacity	30 gal	30 gal	30 gal	30 gal	30 gal	30 gal	30 gal	30 gal	30 gal	30 gal	30 gal	30 gal	30 gal	30 gal

The Unloaded Vehicle Weight (UVW) listed represents the weight of one trailer with that model's standard equipment including the content of specified Option Packages. * See back cover for further specification definitions.



SUPER SLIDE OPTIONS

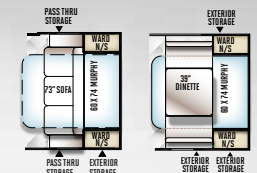


MURPHY BED OPTION:

2104S,

2304 & 2306

2109S



MINI LITES

21SSL ROO

INTERIOR COLORS: JASPER / MAPLE



ROCKWOOD

ROO

A value that'll make you jump! we have a trailer just for you. Whether you are interested in the expanded interior space provided by the spacious drop down bunks with heated mattresses or the ability to bring an ATV along with the feel of a traditional trailer, the Rockwood Roo will deliver with the quality and amenities you expect. Rockwood brings the necessities of residential living on the campsite.

231KSS

INTERIOR COLORS: WINSTON / DRIFTWOOD



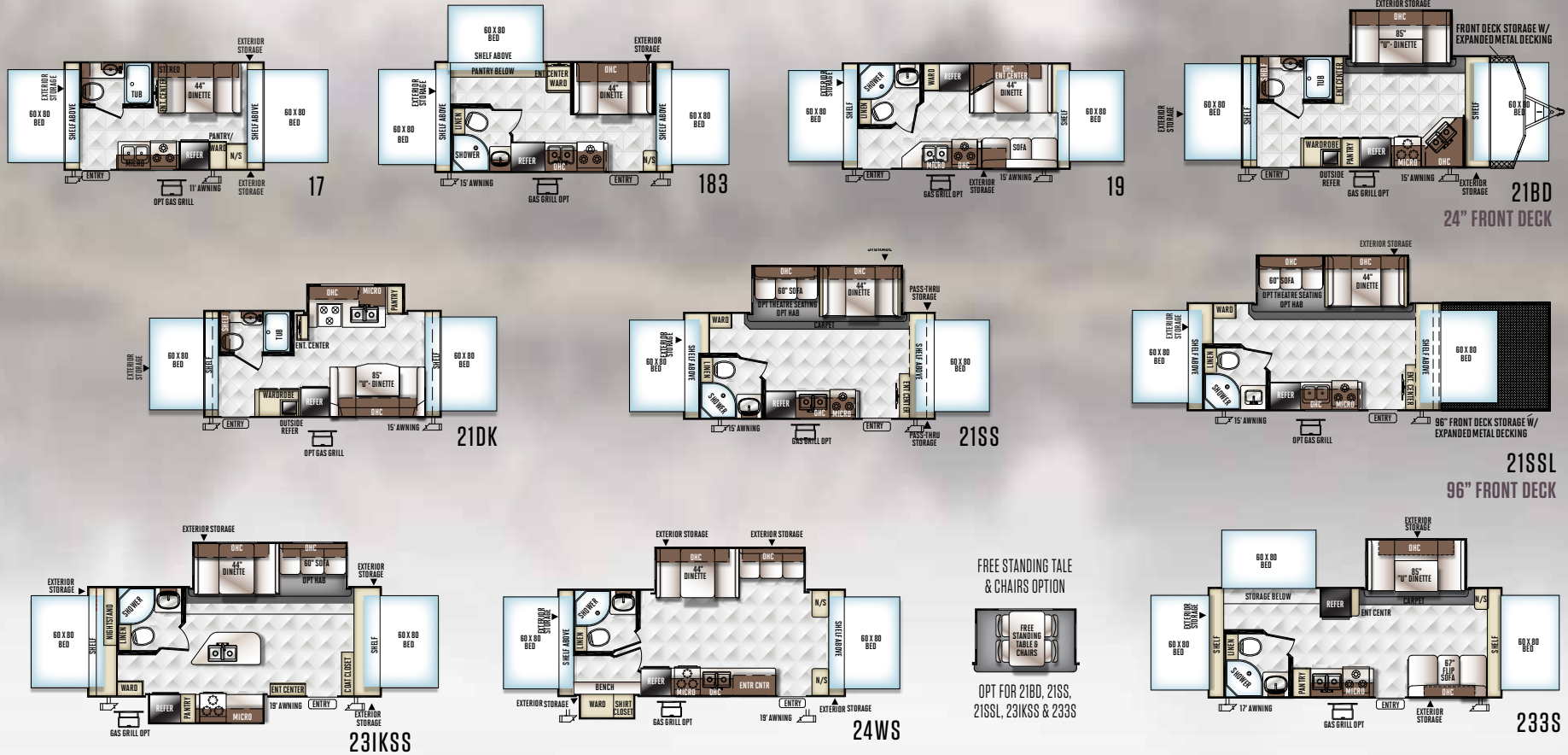
SPECIFICATIONS & FLOORPLANS

	17	183	19	21BD	21DK	21SS	21SSL	23IKSS	233S	24WS
Unloaded Vehicle Weight *	3465	4018	3933	4891	4141	4854	5674	5418	4882	5232
Base Dry Hitch Weight	384	368	340	633	590	616	404	588	602	672
Base Dry Axle Weight	3033	3612	3555	4220	3513	4200	5232	4792	4242	4522
Cargo Capacity	929	750	807	1442	1449	1462	1530	1170	1420	1440
Length (Hitch To Bumper)	18' 9"	21' 3"	21' 3"	23' 11"	21' 9"	22' 10"	32' 2"	25' 3"	25' 3"	25' 3"
Trailer Length (Open)	23' 1"	25' 7"	25' 7"	27' 10"	26' 1"	27' 2"	36' 4"	29' 7"	29' 7"	29' 7"
Width	96"	96"	96"	96"	96"	96"	96"	96"	96"	96"
Height With A/C	123"	124"	124"	130"	126"	130"	134"	130"	126"	130"
Interior Height	80"	80"	80"	80"	80"	80"	80"	80"	80"	80"
Fresh Water Capacity	43 gal	43 gal	43	43 gal	43 gal	43 gal	43 gal	43 gal	43 gal	43 gal
Gray Water Capacity	30gal	30gal	30gal	30gal	30gal	30gal	30gal	30gal	30gal	30 gal
Black Water Capacity	30gal	30gal	30gal	30gal	30gal	30gal	30gal	30gal	30gal	30 gal



Optional Oyster Exterior

The Unloaded Vehicle Weight (UVW) listed represents the weight of one trailer with that model's standard equipment including the content of specified Option Packages. * See back cover for further specification definitions.



POPULAR FEATURES

Just a few features that make us great. Rockwood takes careful consideration to each feature added into each product produced. Every detail is considered ranging from extra sleeping room, storage, comfort and convenience. Take time to review the features listed below and match them with the competition's products. We're confident you'll discover Rockwood is the superior choice.



- A** Power Awning with tilt adjustment and LED indirect lighting (Opt.)
- B** 24" and 32" TV, entertainment center and sound bar where applicable. (Selected Models)
- C** Radius Glass Door Shower (N/A Models with Tub Bases)
- D** Solid Surface Kitchen counter tops with flush mount sink and covers. (Excludes 1902, 1905 & 1909S)
- E** Deluxe Tri-Fold Sleeper Sofa (Opt. 21SS, 21SSL, 231KSS, 24WS, 2506S)
- F** Deluxe Tri-fold Sleeper Sofa with Comfortable, Easy Set-up Queen Bed.



Standard White Exterior

Optional Oyster Exterior



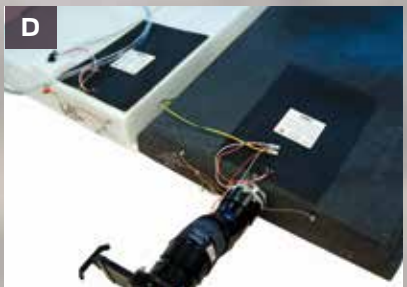
A



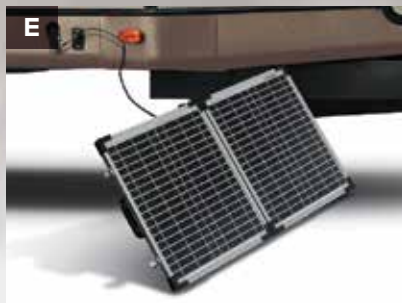
B



C



D



E



F

A Rear camera prep. (Std. all models) The Furrion observation camera system with digital wireless technology is sold separately.

B Control Panel (Std.)

C Night shades (Std.)

D Heated holding tanks with 12 Volt heat pads secured to the bottom No need to use the furnace to heat tanks when traveling. (Opt.)

E Solar Panel Prep (Std. All Models) The Zamp 40 amp. portable solar panel shown is sold separately.

F 60" Heated theater seating available on Roo 21SS, 23IKSS & 24WS

SOFA LEATHER APPEARANCE, DINETTE CUSHIONS & ACCESSORIES (ROO VALANCE ARMS)

VALANCE TOP, PILLOWS & DINETTE INSERT



CURTAINS



DRIFTWOOD DÉCOR STANDARD

JASPER

CLOTH SOFA

VALANCES & DINETTE CUSHION INSERT



DINETTE SEATS & ACCESSORIES

CURTAINS



MAPLE DÉCOR OPTION

STERLING

SOFA LEATHER APPEARANCE, DINETTE CUSHIONS & ACCESSORIES (ROO VALANCE ARMS)

PILLOWS, DINETTE INSERT VALANCE TOP



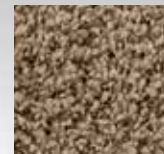
CURTAINS



STANDARD FLOOR COVERING



OPTIONAL FLOOR COVERING



CARPET

WINSTON

POPULAR FEATURES

ROCKWOOD MINI LITE

QUALITY CONSTRUCTION

Just a few features that make us great. Quality built trailers always bring the same results: long-lasting products you can depend on to enjoy with your family year after year. These are some of our highlights.



A Glued and screwed wood cabinetry

B Aluminum dinette frames for added strength and weight savings

C Nitrogen filled tires for less air pressure fluctuation and a safer ride

D Extra large dinette storage drawers and full extension metal drawer guides in the kitchen

E Dexter Torflex Axles:
· Independent wheel suspension and self-damping action
· Rubber cushioning eliminates metal-to-metal contact.
· Forged torsion arm for maximum strength

Models are also equipped with E-Z Lube® System and Nev-R-Adjust® Brakes.

F Standard under belly to protect trailer components as well as increasing aerodynamics on Mini Lites (Excludes 1902, 1905, 1909S and Roos)

G Aluminum Frame Construction with high gloss fiberglass exterior and deluxe graphics

ROOF CONSTRUCTION



Vacuum-bonded radius roof with vaulted ceiling providing superior insulation and more interior height.



4" thick roof with built in insulated A/C ducts



Built strong to enable you to conveniently perform periodic roof maintenance.

WALL STRENGTH



Structurally engineered materials makes our vacuum-bonded walls some of the strongest in the industry.

VACUUM-BONDED LAMINATED CONSTRUCTION



Rockwood is one of only a few manufacturers with six sided aluminum framing. Vacuum bonded walls and roof to ensure a well-insulated, light weight, strong structural trailer.

STANDARDS & OPTIONS

ROCKWOOD MIN LITE & ROO

MODELS	R	ML	MODELS	R	ML	MODELS	R	ML
STANDARD PACKAGE H (1902, 1905, 1909S)	--	S*	Polished Alloy Wheels	S	S	Engineered Mold and Mildew Resistant Floor Covering	S	S
Tinted Bonded Frameless Windows	--	S	LED TV W/ Multi-directional Antenna	S	S	Ducted Furnace	S	S
Aluminum Wheels	--	S	Prewire for Back Up Camera and Solar	S	S	13,500 BTU Ducted Air (N/A 1902, 1905, 1909S, 17, 183, 19)	S*	S*
AM/FM Stereo W/ DVD Player	--	S	Multi Zone Stereo W/ DVD/CD/AM/FM and Bluetooth Control	S	S	15,000 BTU A/C	0	0
Dual LP Bottles	--	S	Outside Speakers	S	S	13,500 Roof A/C (Std. 17, 183, 19)(Opt. 1902, 1905, 1909S)	S*	S*
Flush Mount Stove Cover	--	S	Maxxair® Ventilation Fan and Vent Cover (2 for Pkg. 6)	S	S	Carbon Monoxide Detector	S	S
Black Tank Flush	--	S	13,500 BTU Roof AC	S	S	12 Volt Power Plug Hook-up	S	S
Single Door Auto Gas/Elec. Refrigerator	--	S	Night Shades	S	S	CSA	0	0
Ducted Furnace	--	S	Double Bowl Undermount Kitchen Sink	S	S	Monitor Panel Switch Station	S	S
Heated Mattress	--	S	Solid Surface Kitchen Countertops	S	S	55 Amp Converter With Charger	S	S
TV Antenna	--	S	Recessed Cooktop W/ Flush Mount Cover	S	S	Battery Disconnect Switch	S	S
Microwave Oven	--	S	Microwave Oven	S	S	Recessed Ceiling LED 12 Volt Interior Lighting	S	S
Spare Tire Carrier and Cover	--	S	Double Door Auto Gas/Elec. Large Refrigerator (Opt 17, 19 and 183 Roo)	S	S	Bunk Fan/Light Combination with Each Bed	S	--
Water Heater w/ Interior Gas and Electric Switches	--	S	Water Heater w/ Interior Gas and Electric Switches	S	S	Mounted 24" LCD TV (Opt. 1902, 1905, 1909S)	S	S*
Gas Oven	--	S	Awning	S	S	Bedroom Mounted 24" LCD TV (Opt. R: 23IKSS, 233S Only)	0*	--
Outside Speakers	--	S	Black Tank Flush	S	S	Mounted 32" LCD TV (R: 24WS, 21BD, 21DK, 21SS, 21SSL, 23IKSS ML: 2506S, 2507S, 2509S)	S*	S*
Night Shades	--	S	Spare Tire W/ Carrier and Cover	S	S	Digital AM/FM/CD/DVD w/ Remote	S	S
			Tinted Bonded Frameless Windows	S	S	MP3 Player Hook-Up	S	S
STANDARD PACKAGES	PKG. G	PKG. D	Outside Grill (Pkg. D Only)	0	S	Premium Soundbar (Where applicable)	--	S*
Square Bunk Ends W/ Attached Boots & Aircraft Cable (Pkg. G Only)	S	--	Automotive Front Windshield (Pkg. D Only N/A W/ Murphy Bed)	--	S*	Decorative Valances	S	S
Automotive Grade Easy Latch Bunk Latch/Lock (Pkg. G Only)	S	--				Heated Theater Seating w/USB Ports ILO Sofa (Opt. 21SS, 21SSL, 23IKSS and 24WS Only)	0*	--
Aluminum Cage Dinette Base	S	S	INTERIOR FEATURES			Deluxe Tri-Fold Sleeper Sofa (Opt. 21SS, 21SSL, 23IKSS, 24WS and 2506S Only)	0*	0*
6 Sided Aluminum Cage Construction	S	S	Driftwood Interior	S	S	44" Family Dinette (N/A 2104S, 2504S, 2506S, 2507S, 2509S, 21DK and 233S)	S*	0*/S*
Vacuum Laminated 1 Piece Roof and Walls	S	S	Maple (w/ Solid Maple Glaze Finished Cabinet Doors) Interior	0	0	48" X 84" Spacious King-U-Style Dinette (Std. 2104S, 2504S, 2506S, 2507S, 2509S, 21BD, 21DK, 233S)	S*	S*
Enclosed Underbelly (Pkg D. Only)	--	S	Decorative Slide Out Fascia	S	S			
4 Frame Mounted Stabilizer Jacks	S	S	Solid Wood and Raised Panel Doors and Drawers	S	S			
Torsion Axle, Rubber-Ryde Suspension	S	S	Screwed and Glued Wood Cabinetry	S	S			
Nitro Filled Radial Tires	S	S	Residential Full Extension Metal Drawer Guides	S	S			



MODELS

Free Standing High Pressure Laminated Table with Swing Level Legs (Swing Level Legs N/A 1902, 1905, 1909S, 2109S, 2304, 2304KS, 2306, 2502KS, 2506S)

Free Standing Table and Chairs (N/A 17, 183, 19, 21DK.) (Opt. ML: 2104S, 2504S, 2506S, 2507S, 2509S)

Stainless Steel Appliances

Double Door Auto Gas / Elect. Refrigerator

Raised Refrigerator Panels

Single Door Auto Gas/Elec. Refrigerator (1902, 1905, 1909S, R: 17 Only)

3 Burner High Output Gas Range w/ Glass Stove Top Cover

Gas Oven (Required 21DK, 23IKSS, 2304KS, 2502KS, 2503S)

Under Mount Double Bowl Kitchen Sink w/ Residential Style Faucet (N/A 1902, 1905, 1909S)

Residential One-Piece Sink Cover

Cutting Board

Counter Top Extension (Std. 2109S, 2304, 2306, 2507S, 2509S, 2504S)

Water-Pur Filtration System

Tub Surround

Radius Glass Door Shower

Bathroom Skylight

110 DSI Gas/Electric Six Gallon "Quick Recovery" Water Heater By-Pass Kit

Foot Flush Toilets

Extra Maxxair® Ventilation Fan and Vent Cover

Murphy Bed w/ Under Sofa Storage System and Outside Access for Unmatched Floor Plan Flexibility (Std., 2304KS, 2503S, 2507S, 2509S, 2504S, 1902, 1905)(Opt. 2104S, 2304, 2306)

Murphy Bed w/ Dinette for Unmatched Floor Plan Flexibility (Opt. 2109S)

Heated Mattress

R ML

S S*

O* O*

O O

S* S*

O O

S* S*

S S

O* O*

S S*

S S

S S

-- S*

S S

S S

S* S*

S S

S S

S S

S O

-- O*/S*

-- O*

S

MODELS

EXTERIOR FEATURES

Fully Aluminum Frame (Floor, Sidewall, & Roof)

Insulation Factors R-7 Side Wall, R-12 Floor and R-14 Ceiling

Radius Roofs w/ Interior Vaulted Ceilings

Vinyl / Rubber Composite Roofing Membrane

T V Antenna w/ Cable & Satellite Hook-Up

Rear Observation Camera Prep w/ Molded Mounting Plate

Laminated Oyster Colored Fiberglass Sidewalls

Laminated Fiberglass Sidewalls

Distinctive Black Exterior Trim

Electric Slide-Out (All Slide Out Models)

Lower Front Diamond Plate Panel

Decorative Frame Skirting (2104S, 2504S, 2506S, 2507S, 2509S Only, N/A 17 Roo)

Easy to Reach Lockable Bed Latch System

Bed Cable System (No Poles)

Rear Ladder

Bike Rack Ladder Attachment

Power Awning With Adjustable Rain Dump and LED Lighting

Awning Slide Topper

Entrance/Screen Door

Friction Hinge Entrance Door

Large Assist Grab Handles

Radius Corner Windows and Doors

Thermopane Windows

Large Dinette Picture Window (N/A 1902)

Outside Grill Prep

Outside Gas Grill and Worktable (Opt. 1902, 1905, 1909S)

Outside Shower

R ML

S S

S S

S S

S S

S S*

S S

O O

S S

S S

S S

-- S

S* S*

S --

S --

-- O

-- O

O O

O O

S S

S S

S S

S S

O O

S S*

S S

O S

S S

MODELS

1/2 Sliding Storage Tray (N/A 1902, 1905, 2304 and All Models

w/ Murphy Bed) (Opt. 17, 183, 19, 21SS, 21SSL, 23IKSS)

Outside Antifreeze Stations

Two-20 Lb Gas Bottles (1902, 1905, 1909S Only)

Two-30 Lb Gas Bottles

Molded Bottle Cover

Surface Coated Steel I-Beam Frame (N/A 1902, 1905, 1909S)

8' X 8' Front Storage Deck: 1300 LBS. Max Capacity (21SSL Only)

2' X 8' Front Storage Deck W/ 350 LBS. Max Capacity (21BD Only)

Fuel Station with 18 Gallon Capacity (Gasoline Only) (Opt. 21SSL Only)

Toylok Mounted Locking System (21BD, 21SSL Only)

Power Tongue Jack

Easy Lube Axles and Nev-R Adjust Brakes

Radial Tires w/ Nitro Fill (1902, 1905, 1909S, 17 Roo. w/ Single Axle)

Double or Triple Entry Step

Off Road Package (Includes: 15" Off Road Tires and Aluminum Wheels)

(21SSL Only)

Electronically Controlled Heated Holding Tanks

Black Water Flush

R ML

O* O*

S S

S S*

-- S*

S S

S S*

S* --

S* --

O --

S* --

O O

S S

S S

S S

S* --

O O

S S

STANDARDS & OPTIONS

R = ROO, ML = MINI LITE

S = STANDARD, O = OPTIONAL, -- NOT AVAILABLE, * = SELECTED MODELS



PRE-DELIVERY INSPECTION FACILITY

20,000 square feet of quality assurance. The bare essentials for a premium product. This state-of-the-art facility gives immediate daily feedback to production for quality assurance in every unit built.



Forest River, Inc. encourages our customers to purchase their Forest River products from a local dealership whenever possible for the following reasons:

- 1) Forest River, Inc. dealers are independently owned and operated businesses so priority service and scheduling is at their discretion and is often provided to customers that purchased their unit at that dealership.
- 2) Purchasing locally allows customers to establish meaningful relationships with a dealer, enhancing the RV experience through assistance with product questions, user tips or RV regulations for your state or country, and much more!
- 3) Canadian customers must meet requirements to bring an RV purchased out of the country to their home. These requirements may involve additional inspections and certifications, taxes and fees. Your local Canadian Dealer is a professional at meeting these requirements.
- 4) Scheduling timely warranty repairs and adjustments through a local dealership provides far greater flexibility and convenience to you, the customer!

It is the goal of Forest River, Inc. that all of our RV owners fully enjoy the RV experience and that customer satisfaction meets or exceeds their expectations!

24/7 EMERGENCY ROADSIDE ASSISTANCE

For a worry-free ownership experience

Forest River includes one

year of Coach-Net RV Technical & Roadside Assistance with each RV purchase. Whether new to the RV lifestyle or an experienced RV enthusiast, Forest River owners have 24/7 access to technical, operational and emergency road service coverage throughout the US & Canada.

Coach-Net's fast, dependable service is just a phone call away.

Coach-Net®
RV Technical & Roadside Assistance

LOOK FOR OUR
OTHER POPULAR
LINES OF ROCKWOOD
CAMPING TRAILERS.



Rockwood Signature Ultra Lite TT, Fifth Wheel and Windjammer



Rockwood Ultra V, Ultra Lite Travel Trailer & Fifth Wheels



Rockwood Freedom, ESP, Premier, High Wall & Hard Side Camping Trailers.

Specification Definitions

GVWR (Gross Vehicle Weight Rating) - is the maximum permissible weight of the unit when fully loaded. It includes all weights, inclusive of all fluids, cargo, optional equipment and accessories. For safety and product performance do NOT exceed the GVWR.

GAWR (Gross Axle Weight Rating) - is the maximum permissible weight, including cargo, fluids, optional equipment and accessories that can be safely supported by a combination of all axles.

UVW (Unloaded Vehicle Weight)* - is the typical weight of the unit as manufactured at the factory. It includes all weight at the unit's axle(s) and tongue or pin and LP Gas. The UVW does not include cargo, fresh potable water, additional optional equipment or dealer installed accessories.

*Estimated average based on standard build optional equipment.

CCC (Cargo Carrying Capacity)** - is the amount of weight available for fresh potable water, cargo, additional optional equipment and accessories. CCC is equal to GVWR minus UVW. Available CCC should accommodate fresh potable water (8.3 lbs per gallon). Before filling the fresh water tank, empty the black and gray tanks to provide for more cargo capacity.

**Estimated average based on standard build optional equipment

Each Forest River RV is weighed at the manufacturing facility prior to shipping. A label identifying the unloaded vehicle weight of the actual unit and the cargo carrying capacity is applied to every Forest River RV prior to leaving our facilities.

The load capacity of your unit is designated by weight, not by volume, so you cannot necessarily use all available space when loading your unit.

ROCKWOOD

WARRANTY

For details on Rockwood's complete warranty program, see your Rockwood dealer. When it comes to backing products with the same quality and commitment it does when it begins the manufacturing process, the only name you have to remember when you're looking for a recreational vehicle is Rockwood. Rockwood offers the following additional limited warranties to the original purchasers. Consult written warranty for details.

1. Twelve-year vinyl roof warranty,
2. Two-year fiberglass warranty,
3. Ten-year Torflex® axle warranty,
4. One-year bumper to bumper warranty,
5. Five-year tent warranty,
6. Available second-year warranty



Learn More
Scan this barcode using a QR Reader on your smart phone to learn more about Forest River.



A Berkshire Hathaway company.



201 WEST ELM MILLERSBURG, IN 46543 WWW.FORESTRIVERINC.COM/ROCKWOOD 574.642.2640

YOUR ROCKWOOD DEALER

All information contained in this brochure is believed to be accurate at the time of publication. However, during the model year, it may be necessary to make revisions and Forest River, Inc., reserves the right to make all such changes without notice, including prices, colors, materials, equipment and specifications as well as the addition of new models and the discontinuance of models shown in this brochure. Therefore, please consult with your Forest River, Inc., dealer and confirm the existence of any materials, design or specifications that are material to your purchase decision. Litho. U.S.A. FOR 1386 W: 2016.10.12